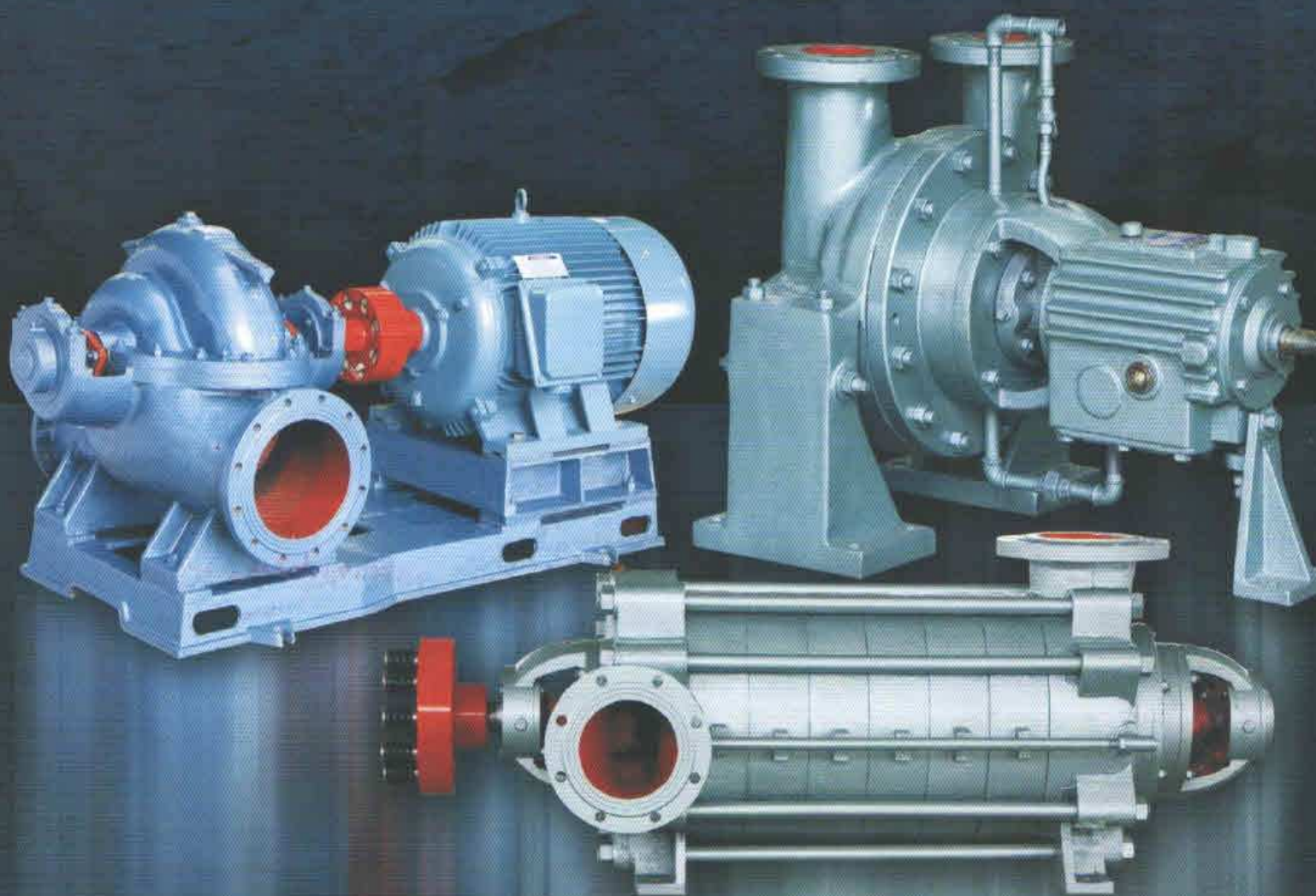


精品展示

Competitive water pump



S型单级双吸中开式清水泵

S型单级双吸中开式清水泵采用国内最优秀的水力模型制造，具有高效节能的特点。本系列泵扬程在9M~140M；流量为126m³/h~12500m³/h，主要供输送清水及物理化学性质类似于水的温度不超过80℃的液体之用，适用于城镇给排水、城市供热系统、电站、中央空调、农田排灌、防洪排涝、水利工程等场合。

所有泵均可用填料和机械密封，若订货不作说明，以填料出厂。

从电动机方向往泵看，泵为顺时针方向旋转或逆时针方向旋转。用户在订货时应指明旋转方向，当顺时针方向旋转时，水泵进口在右边；当逆时针方向旋转时，水泵进口在左边。

S single stage double suction axially split clean water pump is energy-saving and highly efficient and be made according to the most excellent hydraulic model. The head of this series of pump is between 9M to 140M; and the flow rate is between 126m³/h and 12500m³/h, they are mainly used to transport clean water or the liquid whose physical and chemical properties is similar to water (the temperature is below 80℃). This series of pump is widely used in water supply and drainage in town, boiler system in city, electric station, central air-conditioner, farm irrigation, flood drainage and control, hydraulic engineering and other similar occasion.

All of pumps can be sealed up with filler or machinery. Filler will be used to seal up if the order has no special packing requirement.

Looking the pump from the direction of the engine, the pump can be revolved in clockwise and anti-clockwise. The user must indicate the revolving direction clearly when ordering, if clockwise, the inlet of the pump is on the right; if anti-clockwise, the inlet of the pump is on the left.

泵的安装、起动、运转、停止

1. 安装顺序

- (1) 将底座放在地基上，在地脚螺栓处垫铁，将用调整其间的楔形垫铁的方法校正水平，并适当拧紧地脚螺栓，以防走动。
- (2) 在基础与泵地脚之间灌注混凝土。
- (3) 待混凝土干涸后拧紧地脚螺栓并重新检查水泵的水平度。
- (4) 校正电机轴与水泵的同轴度。
- (5) 检查电机转向与水泵转向相一致后，装上联轴器的联接柱销。
- (6) 水泵进出管路应另设支架支撑，不得由泵体支撑。

The installation, start, operation and stop of pump 1. installation steps

- (1). Put the base on the earth, block on the foundation bolt, adjust the cross level like the way to adjust the wedged block in the middle, and screw down the foundation bolt to avoid ambulation.
- (2). Prime the concrete between the base and the sizing block of the pump.
- (3). Screw down the foundation bolt when the concrete is dry, then recheck the levelness.
- (4). Adjust the concentricity between the engine axis and the pump.
- (5). Install the connecting plug of the coupling after checking the engine turning direction is correspond with the pump turning.
- (6). ① The pipeline of the pump must be supported by other bracket
② can't be supported by pump body.



S型单级双吸中开式清水泵性能参数表

泵型号 Type of pump	流量 Flow rate (m ³ /h)	扬程 Head (m)	效率 Efficiency (%)	轴功率 Power of shaft (KW)	电机 Engine (KW)	转速 rotation speed (r/min)	必需汽蚀余量 NPSH(m)
150S100	160	100	73	59	75	2900	4.5
150S50	170	47.6	80	27.6	37	2900	4.5
150S50A	144	40	75	20.9	30	2900	5.2
150S50B	133	36	70	18.6	22	2900	5.2
150S78	160	78	75.5	46.5	55	2900	4.6
150S78A	144	62	72	33.8	45	2900	4.6
200S42	280	42	84	38.1	45	2900	4.4
200S42A	270	36	80	33.1	37	2900	4.4
200S63	280	63	82.7	61.6	75	2900	4.4
200S63A	270	46	75	48.3	55	2900	4.0
200S95	280	95	79	91.7	110	2900	4.0
200S95A	270	87	75	85.3	110	2900	4.0
200S95B	245	68	74	61.3	75	2900	7.1
250S14	485	14	85.8	21.7	30	1450	7.1

泵型号 Type of pump	流量 Flow rate (m ³ /h)	扬程 Head (m)	效率 Efficiency (%)	轴功率 Power of shaft (KW)	电机 Engine (KW)	转速 rotation speed (r/min)	必需汽蚀余量 NPSH(m)
250S14A	432	11	82	15.8	22	1450	6.7
250S24	485	24	86	36.9	45	1450	6.7
250S24A	414	20.3	83	27.6	37	1450	6.3
250S39	485	39	8.6	62.1	75	1450	6.3
250S39A	468	30.5	79	49.2	55	1450	5.8
250S65	485	65	78.6	110	132	1450	5.8
250S65A	468	54	77	86	110	1450	5.8
300S12	790	12	84.8	32	37	1450	4.5
300S12A	684	10	78	23.9	30	1450	4.5
300S19	790	19	86.8	51	55	1450	5.2
300S19A	720	16	80	38.3	45	1450	5.2
300S32	790	32	86.8	79	110	1450	4.6
300S32A	720	26	84	56.2	75	1450	4.6
300S58	790	58	84.2	149	200	1450	4.4

2. 水泵的起动与停止

- (1) 起动前转动泵的转子，应轻滑均匀。
- (2) 关闭出水闸阀，向泵内注水（如无底阀则用真空泵抽吸引水），要保证泵内充满水，无空气窝存。
- (3) 如果泵上装有真空表或压力表，要关闭其与泵相连接的旋塞再起动电动机，待转速正常后再打开，然后逐渐打开出水闸阀。
- (4) 均匀的拧紧填料压盖上的压紧螺母，使液体成滴状漏出，同时注意填料腔处的温升。
- (5) 当停止水泵运转时要先关闭真空表及压力表的旋塞和出水管路上的闸阀，然后切断电机电源。
- (6) 长期停止使用时应拆开水泵，将零件上的水擦干，在加工表面涂上防锈油保管好。

2. Start and stop of pump

- (1) Revolve the rotor of the pump make sure it is steady and lubricating before start.
- (2) Inject water to the pump when close the gated valve (Use the vacuum pump to raise water if no foot valve), to confirm the pump must be filled with water and no air exist.
- (3) If there is a vacuum gauge or pressure gauge on the pump, close the faucet which is connecting with the pump first, and then restart the engine. When the revolving speed is normal, open the gated valve gradually.
- (4) Equally screw down the nut on the filling gland to let the liquid leak, at the same time pay attention to the temperature of the filling chamber.
- (5) Close the faucet of the vacuum gauge or the pressure gauge and the gated valve before stop the operation of the pump, then cut off the power.
- (6) The pump must be taken apart if it wouldn't be used for a long time, wipe the parts dry on, paint the rust preventive oil on the surface to keep them well.

3. 运转与保养

- (1) 水泵轴承最高温度不应超过75℃。
- (2) 润滑轴承用的钙基黄油数量应以占轴承体空间的1/3-1/2为宜。
- (3) 填料磨损时可适当压紧填料压盖，若磨损过多时应予更换。
- (4) 运转过程中如发现噪音或其它不正常的声音时应立即停车，检查其原因。
- (5) 定期检查弹性联轴器部件，注意电机轴承温升。

3. Operation and maintenance

- (1) The temperature of the pump bearing must be lower than 75°C.
- (2) The quantity of the calcium oil used to lubricate the bearing had batter occupy 1/3 or 1/2 of the bearing body.
- (3) Compact the filling gland when the filler is lightly worn-out, change the gland if it is seriously frayed.
- (4) Immediately stop the pump when finding abnormal sound or noise in operation and check the pump.
- (5) Check the spring spare part of the coupling regularly and pay attention to the temperature of the engine bearing.

S型单级双吸中开式清水泵性能参数表

泵型号 Type of pump	流量 Flow rate (m ³ /h)	扬程 Head (m)	效率 Efficiency (%)	轴功率 Power of axis (KW)	电机 Engine (KW)	转速 rotas speed (r/min)	必需汽蚀余量 NPSH(m)
300S58A	720	49	81	118.6	160	1450	4.4
300S58B	684	43	80	100	132	1450	4.4
300S90	790	90	79.6	242	315	1450	4.0
300S90A	756	78	74	217	280	1450	4.0
300S90B	720	67	73	180	220	1450	4.0
350S16	1260	16	85.3	70.5	75	1450	7.1
350S16A	1044	13.4	78	49.2	55	1450	7.1
350S26	1260	26	87.5	101.4	132	1450	6.7
350S26A	1116	21.5	83	78.7	90	1450	6.7
350S44	1260	44	87.5	173.5	220	1450	6.3
350S44A	1116	36	84	130.3	160	1450	6.3
350S75	1260	75	85.2	302.8	355	1450	5.8
350S75A	1170	65	84	246.6	280	1450	5.8
350S75B	1080	55	82	197.3	220	1450	5.8
350S125	1260	125	80.5	529.5	710	1450	5.4
350S125A	1157	107	78	432	560	1450	5.4
350S125B	1027	84	77	305	400	1450	5.4
500S13	2020	13	83	86.2	110	970	6.0
500S22	2020	22	84	144.1	185	970	6.0
500S22A	1746	17	80	101	132	970	6.0
500S35	2020	35	88	218.8	280	970	6.0
500S35A	1746	27	85	151	220	970	6.0
500S59	2020	59	83	391	450	970	6.0

泵型号 Type of pump	流量 Flow rate (m ³ /h)	扬程 Head (m)	效率 Efficiency (%)	轴功率 Power of axis (KW)	电机 Engine (KW)	转速 rotas speed (r/min)	必需汽蚀余量 NPSH(m)
500S59A	1872	49	75	333	400	970	6.0
500S59B	1746	40	74	257	315	970	6.0
500S98	2020	98	79.5	678.1	800	970	6.0
500S98A	1872	83	78.5	539	630	970	6.0
500S98B	1746	74	78	451.1	560	970	6.0
600S22	3241	23	88	231.8	280	980	7.0
600S22A	2880	18	87	161.1	185	970	7.0
600S32	3170	32	88	314.4	400	970	7.5
600S32A	2880	26	86	237	250	970	7.5
600S32B	2628	22	84	146.7	220	970	7.5
600S47	3170	47	88	456	560	970	7.5
600S47A	2880	39	88	361	450	970	7.5
600S75	3170	75	88	736	900	970	7.5
800S47	4400	30	89	403.9	450	585	4
800S47A	4750	35	88	515	630	730	6.5
800S47A	4060	25	88	214.1	355	585	4
800S76	5500	76	86	1325	1600	730	6
800S76	4400	49	87	674.9	800	585	4
800S76A	5100	63	85	1030	1250	730	6
800S76A	4070	42	86	541	630	585	4
800S76B	4750	52	84	801	900	730	6
800S76B	3750	35	84	425.5	500	585	4

明功電機有限公司

MEKONG ELECTRIC COMPANY LIMITED

Add: 1870/1A Road 10, Quarter 1, Tan Tao Ward, Binh Tan District, HCM City.

Tel: +84 8 37547415

Fax: +84 8 37547417

<http://www.smv-pump.com>

Email: info@smv-pump.com

